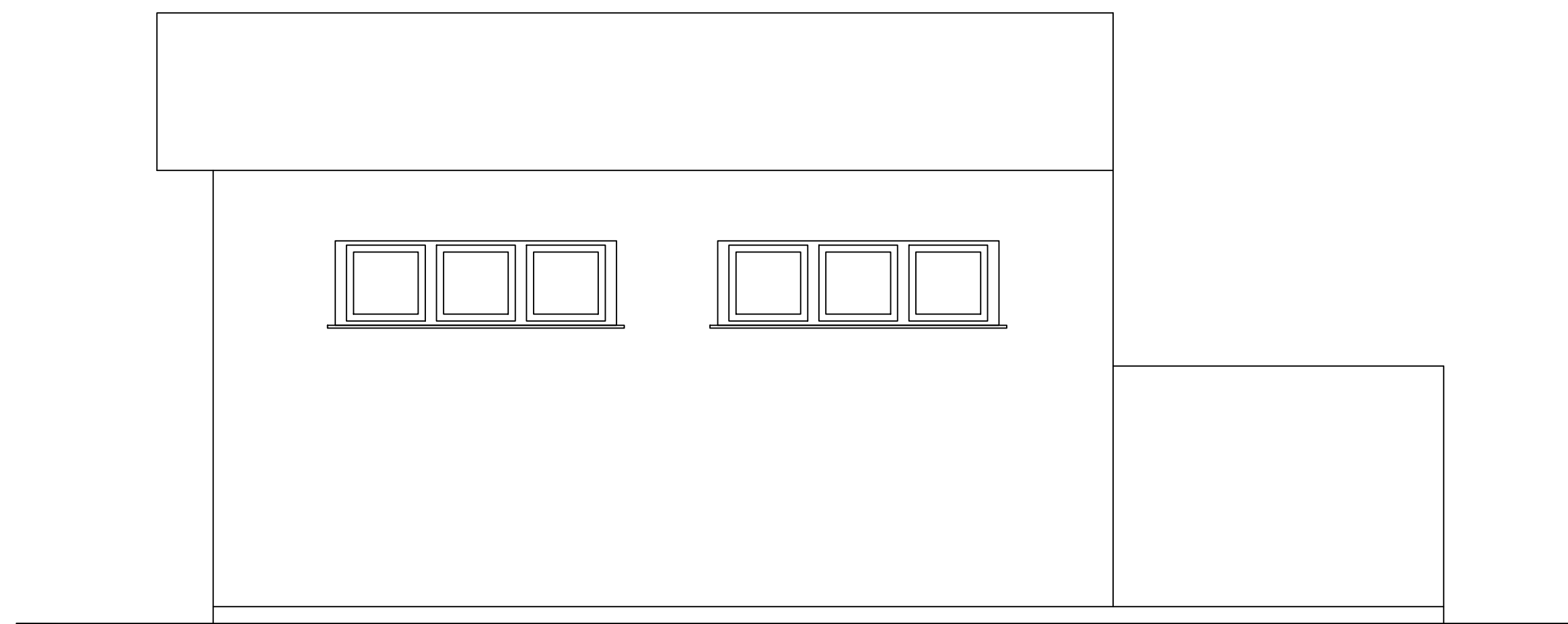
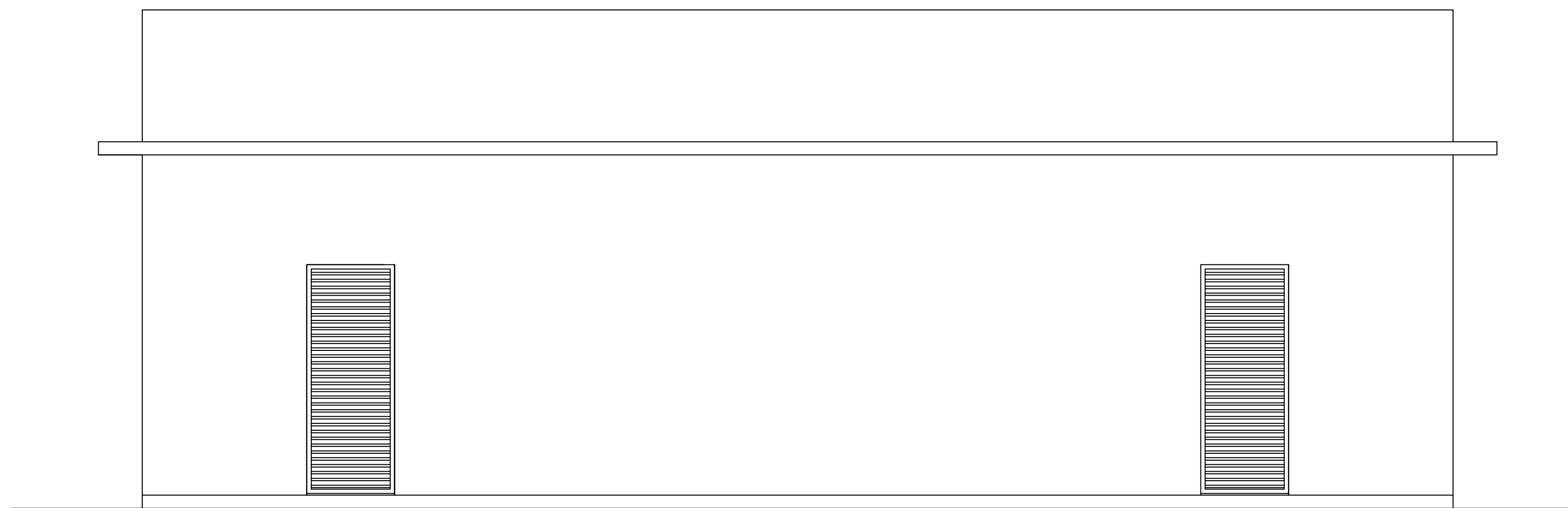


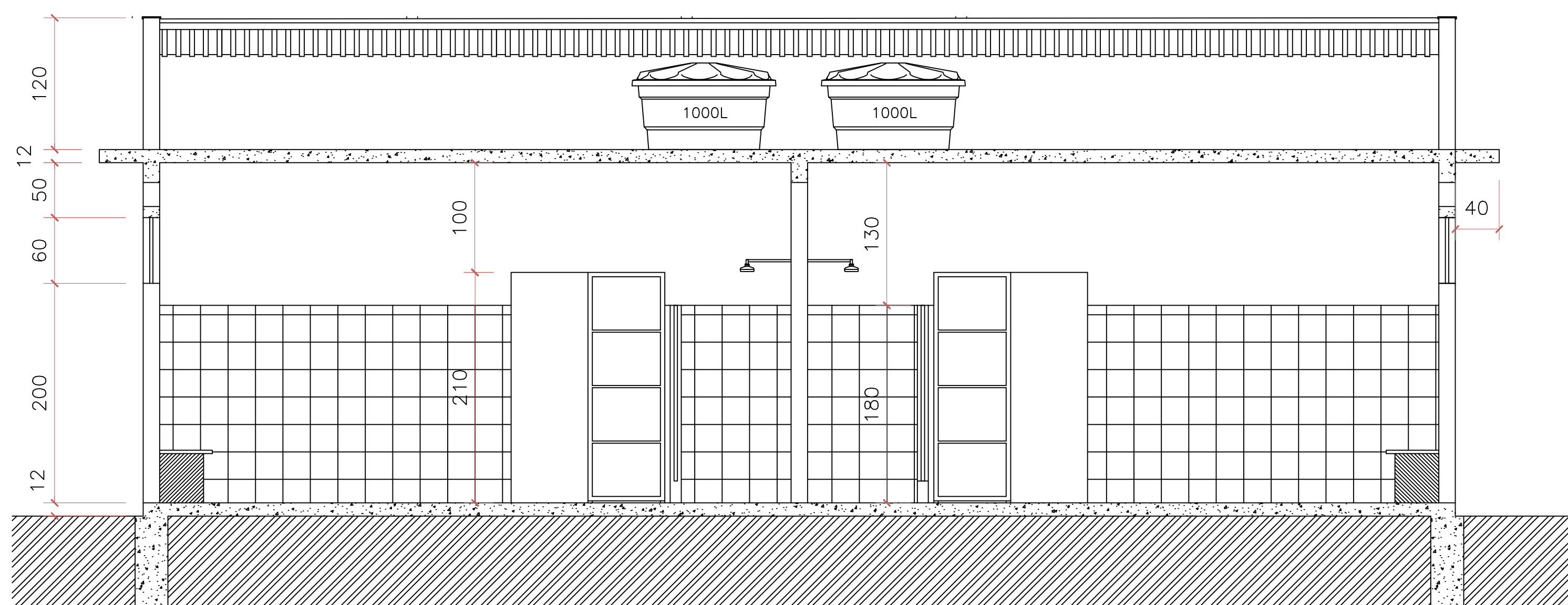
Planta Baixa
Escala 1:50



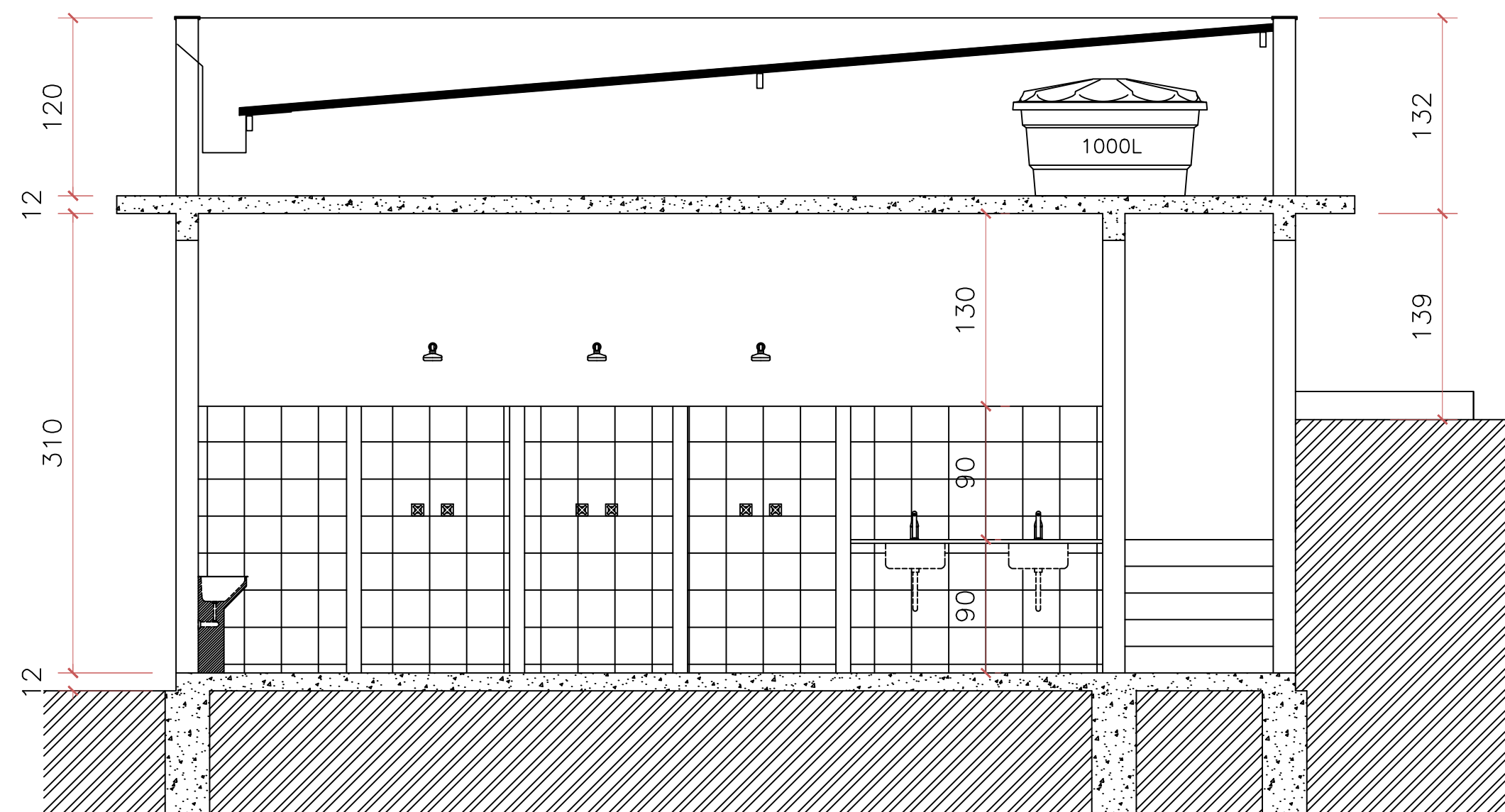
Elevação Lateral
Escala 1:50



Elevação Frontal
Escala 1:50



Corte BB
Escala 1:50



Corte AA
Escala 1:50

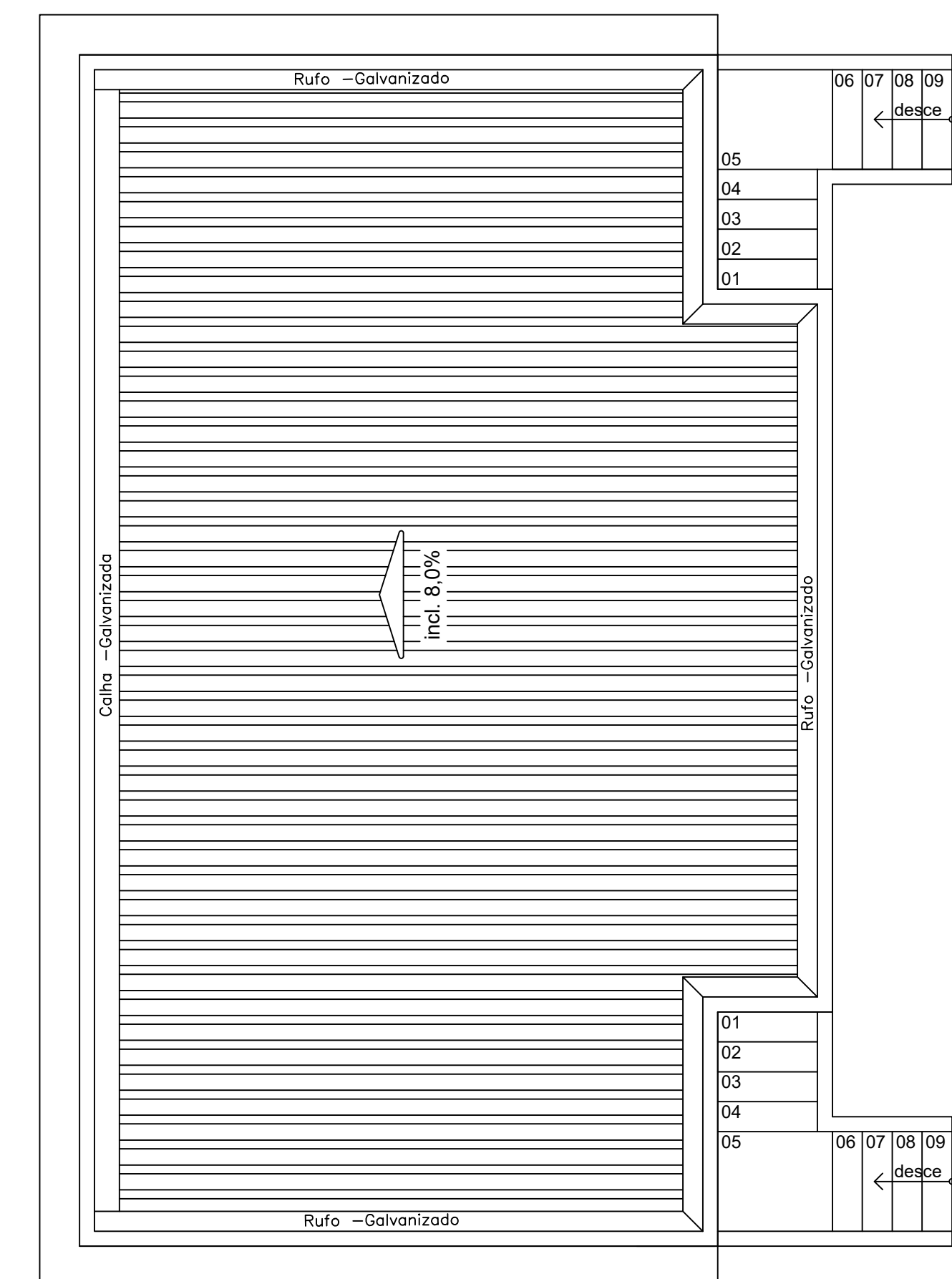


Diagrama de Cobertura
Escala 1:75

PROJETO ARQUITETONICO

Estadio Municipal Joaquim Alves Belo

Prefeitura Mun. Estrela do Indaiá MG

RT - Ricardo Faustini Poltronieri - CREA 78407 D/MG

VESTIÁRIOS

Planta Baixa, Fachadas, Cortes
Diagrama de Cobertura

Escala: indicadas

Desenho:

Data: 10/11/2025

Área 93,34 m²

Unidade: cm

FOLHA

01/01